



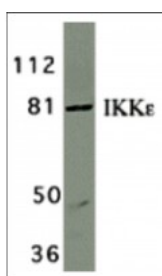
ProSci Incorporated
12170 Flint Place
Poway, CA 92064

Toll Free: +1 (888) 513 9525
Local: +1 (858) 513 2638
Fax: +1 (858) 513 2692

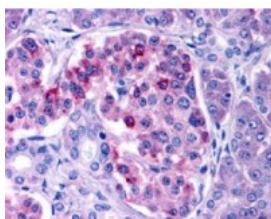
techsupport@prosci-inc.com
prosci-inc.com

IKK epsilon Antibody

CATALOG NUMBER: 2329



Western blot analysis of IKK epsilon in Jurkat whole cell lysate with IKK epsilon/IKK-i antibody at 1 µg/mL.



Immunohistochemistry of IKK epsilon in human pancreas tissue with IKK epsilon antibody at 10 µg/mL.

Specifications

SPECIES REACTIVITY:	Human
HOMOLOGY:	Predicted species reactivity based on immunogen sequence: Mouse: (75%)
TESTED APPLICATIONS:	ELISA, IHC-P, WB
APPLICATIONS:	IKK epsilon antibody can be used for detection of IKK epsilon by Western blot at 1 µg/mL. An 80 kDa band should be detected. Antibody can also be used for immunohistochemistry starting at 10 µg/mL.
USER NOTE:	Optimal dilutions for each application to be determined by the researcher.
POSITIVE CONTROL:	1) Cat. No. 1205 - Jurkat Cell Lysate 2) Cat. No. 1307 - Human Pancreas Tissue Lysate 3) Cat. No. 11-101 - Human Pancreas Tissue Slide
PREDICTED MOLECULAR WEIGHT:	80 kDa
SPECIFICITY:	It has no cross response to IKKa, IKKb, or IKKy.
IMMUNOGEN:	IKK epsilon antibody was raised against a 16 amino acid peptide near the carboxy terminus of human IKK epsilon. The immunogen is located within the last 50 amino acids of IKK epsilon.
HOST SPECIES:	Rabbit

Properties

PURIFICATION:	IKK epsilon Antibody is affinity chromatography purified via peptide column.
PHYSICAL STATE:	Liquid
BUFFER:	IKK epsilon Antibody is supplied in PBS containing 0.02% sodium azide.
STORAGE CONDITIONS:	IKK epsilon antibody can be stored at 4°C for three months and -20°C, stable for up to one year. As with all antibodies care should be taken to avoid repeated freeze thaw cycles. Antibodies should not be exposed to

prolonged high temperatures.

CLONALITY:	Polyclonal
ISOTYPE:	IgG
CONJUGATE:	Unconjugated

Additional Info

ALTERNATE NAMES:	IKK epsilon Antibody: IKKE, IKKI, IKK-E, IKK-i, IKKE, KIAA0151, Inhibitor of nuclear factor kappa-B kinase subunit epsilon, Inducible I kappa-B kinase, I-kappa-B kinase epsilon
ACCESSION NO.:	AF241789
PROTEIN GI NO.:	7288877
OFFICIAL SYMBOL:	IKBKE
GENE ID:	9641

Background

BACKGROUND:	IKK epsilon Antibody: Nuclear factor kappa B (NF- κ B) is a ubiquitous transcription factor and an essential mediator of gene expression during activation of immune and inflammatory responses. NF- κ B mediates the expression of a great variety of genes in response to extracellular stimuli. NF- κ B is associated with I κ B proteins in the cell cytoplasm, which inhibit NF- κ B activity. I κ B is phosphorylated by I κ B kinase (IKK) complex that contains IKK α , IKK β , and IKK γ . A novel molecule in the IKK complex was recently identified and designated IKK ϵ /IKK-i. IKK epsilon is required for the activation of NF- κ B by PMA and T cell receptors but not by TNF α and IL-1. IKK ϵ /IKK-i message is expressed in a variety of tissues and is inducible by TNF α , IL-1, and LPS.
REFERENCES:	1) Peters RT, Liao SM, Maniatis T. IKK epsilon is part of a novel PMA-inducible I κ B kinase complex. Mol Cell 2000;5(3):513-22 2) Shimada T, Kawai T, Takeda K, Matsumoto M, Inoue J, Tatsumi Y, Kanamaru A, Akira S. IKK-i, a novel lipopolysaccharide-inducible kinase that is related to I κ B kinases. Int Immunol 1999;11(8):1357-62 (WD0101)

FOR RESEARCH USE ONLY

October 20, 2017